

Metal Craft[®]
**ALUMINUM
DOCKS & LIFTS**

MC Docks LLC

dba Metal Craft Docks
300 Industrial Parkway
Chardon, Ohio 44024-1044

phone: 800-989-DOCK
440-286-7135

fax: 440-286-7134

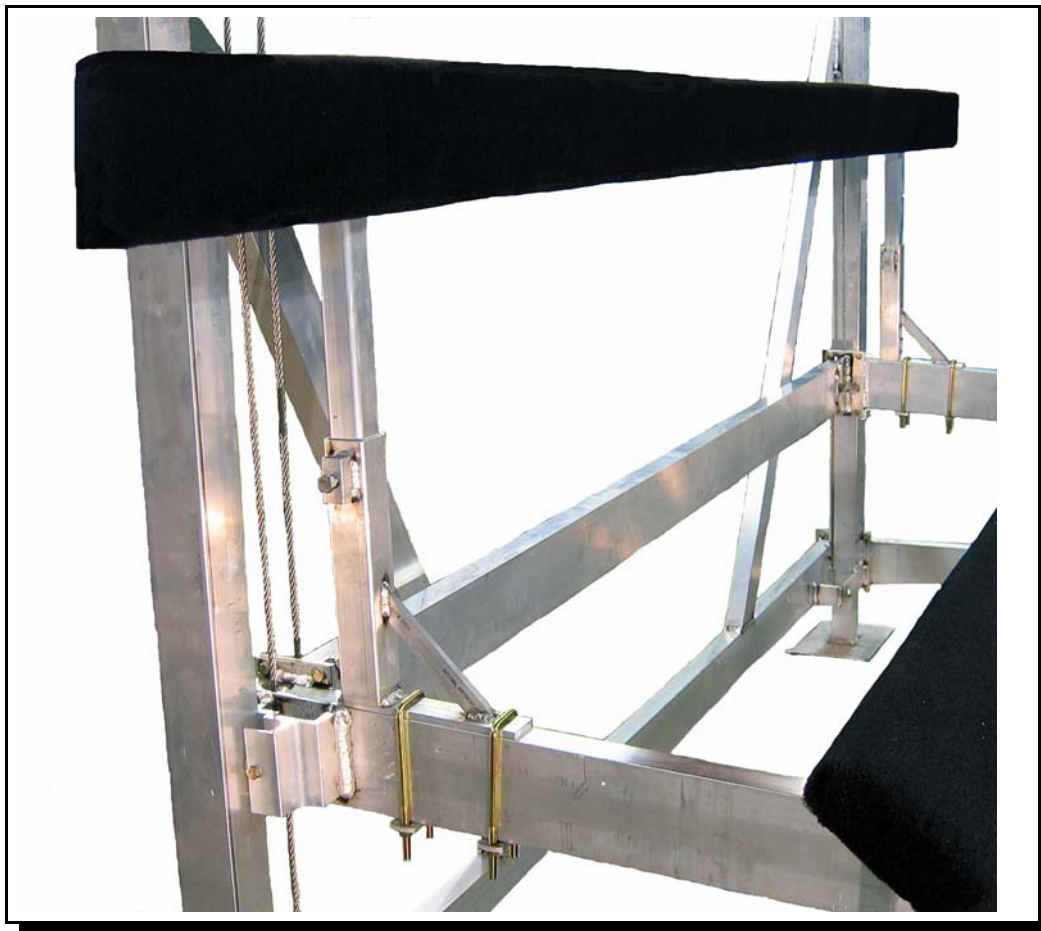
email: info@metalcraftdocks.com

web: www.metalcraftdocks.com
www.metalcraftlifts.com

Assembly and Installation Manual Utility Side Guides Kit for 4000/5000 Vertical LIFT

MCD p/n 1546-01, v1.6

April 4, 2011



A. Parts Description

1. Check the following parts to ensure you have all the items necessary to assemble your new Utility Side Guides Kit for the **Model 4000** (110/122) or **Model 5000** (115/122) Vertical Boat Lift:

Qty Needed	Part No.	Description
------------	----------	-------------

MODEL 4000

2	1530-01	12'L Carpeted Bunks, Std. Wood
1	1521-01	Utility Side Guides Parts Box, Sealed

MODEL 5000

2	1530-01	12'L Carpeted Bunks, Std. Wood
1	1521-01	Utility Side Guides Parts Box, Sealed

2. Check the Parts Box and identify the following items:

Qty Needed	Part No.	Description
------------	----------	-------------

4	1538-01	Utility Side Guide Post, 1-3/4" Sq.x 24"L
4	1539-01	Side Guide Support Base, 2-1/16" Sq. x 12"H
8	1539-02	Side Guide U-Bolt Bottom Plate
1	1516-01	Utility Side Guides Fasteners Kit (Sealed Bag).
1	1546-01	Assembly Manual - Utility Guides, 4000/5000

3. Check the Fasteners Kit (sealed plastic bag) and identify the following items:

Qty Needed	Part No.	Description	Used
8	3709-06	Square U-Bolt, 3/8-16"x7-1/4"Lx1-7/8"IDx2-1/2"T ZY	(2) Support Base x 4
16	3700-02	3/8-16" x 1 1/4" Hex Head Lag Screw Bolt ZY	(4) Bunk Bracket x 4
16	3700-11	3/8-16" Nylon Insert Locknut ZY	(2) Support Base U-Bolt x 8
4	3706-13	1/2-13" x 1 3/4" Hex Head C/S Stainless (SS)	(1) Support Base x 4
4	3706-12	1/2-13" Square Nut 3/4" x 3/4" Stainless Steel	(1) Support Base x 4

If any problems are found, do not proceed.

Call your Metal Craft Dealer.

Or, reach Metal Craft at **800-989-3625** or at **www.metalcraftlifts.com**

B. Assembly Instructions

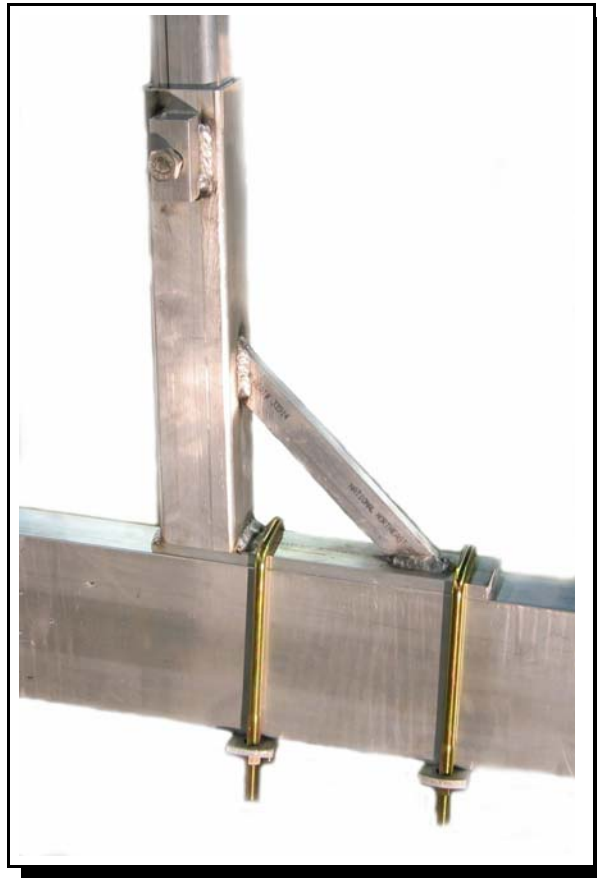
Step #1 -

Assemble the **Side Guide Bunk Base** on top of the Front and Rear Cradle Cross Members. Position them to the outside of the Cradle. This will guide the sides of the boat onto the lift.

- | | | |
|----------|----------------|---|
| 4 | 1539-01 | Side Guide Support Base, 2-1/16" Sq. x 12"H |
| 8 | 1539-02 | Side Guide U-Bolt Bottom Plate |

With these fasteners:

- | | | | |
|-----------|----------------|---|--|
| 8 | 3709-06 | Square U-Bolt,
3/8-16"x7-1/4"Lx1-7/8"IDx2-1/2"T ZY | (2) Support Base x 4 |
| 16 | 3700-11 | 3/8-16" Nylon Insert Locknut ZY | (2) Support Base U-Bolt x 8;
(1) Bunk/Leg Bracket x 8 |



Step #2 -

Insert the **Side Guide Post** into the Side Bunk Base.

- | | | |
|----------|----------------|---|
| 4 | 1538-03 | Utility Side Guide Post, 1-3/4" Sq.x 12"L |
|----------|----------------|---|

Tighten with these Stainless fasteners:

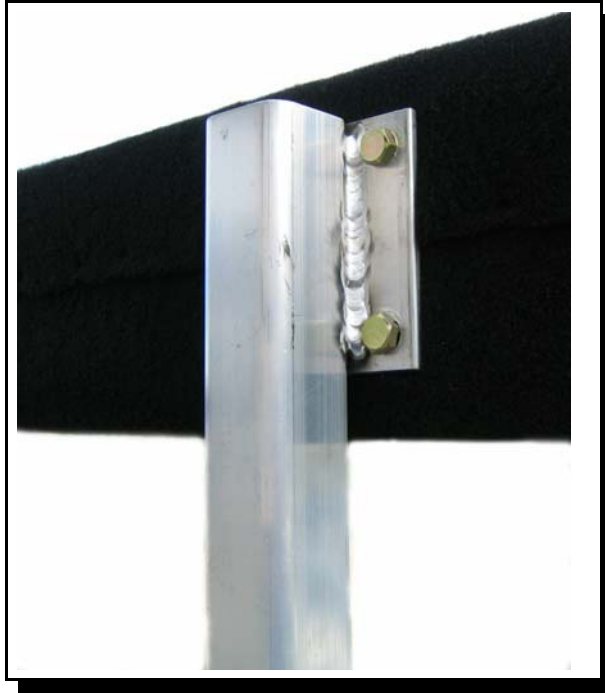
- | | | | |
|----------|----------------|--|----------------------|
| 4 | 3706-13 | 1/2-13" x 1 3/4" Hex Head C/S Stainless (SS) | (1) Support Base x 4 |
| 4 | 3706-12 | 1/2-13" Square Nut 3/4" x 3/4" Stainless Steel | (1) Support Base x 4 |

Step #3 -

Place (2) **Carpeted Bunks** in place.

Screw Lag Bolts into bunk to fasten the Bunks to the Legs:

16 **3700-02** 3/8-16" x 1 1/4" Hex Head Lag Screw Bolt ZY (4) Bunk Bracket x 4



Step #4 -

Adjust **Side Guide Posts** up/down and in/out to fit boat.

Adjustment range is 24" - 33".

Cut off Posts if shorter height is desired.